

# WESLEY

MADE BY JOHANNUS

## *SCHEMATIC DIAGRAMS*

# *W E S L E Y 3 2 - E*

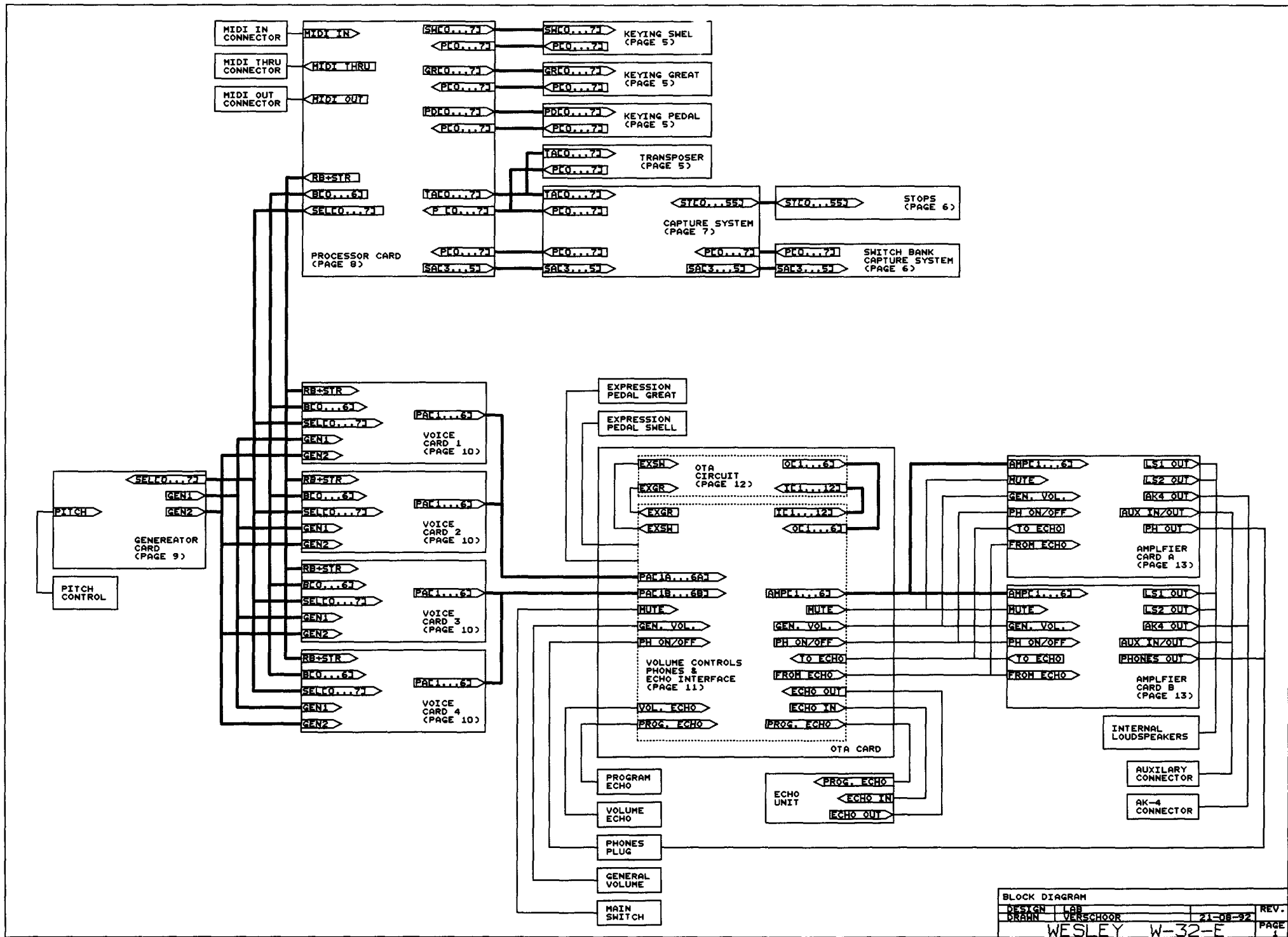
ALTERATIONS RESERVED

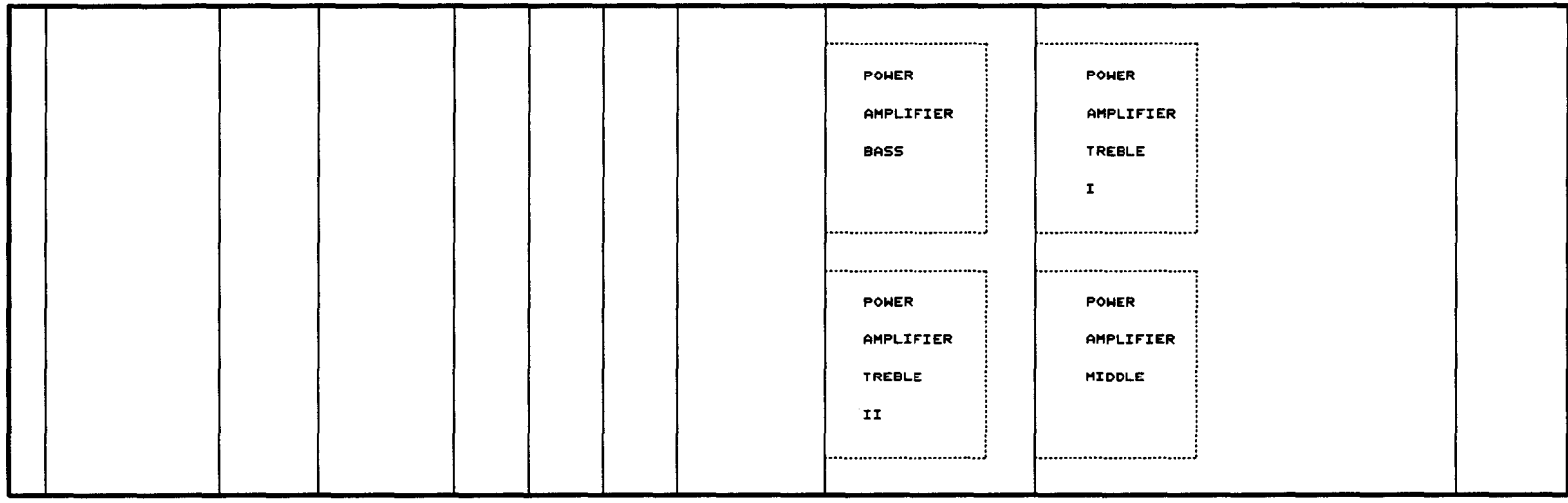
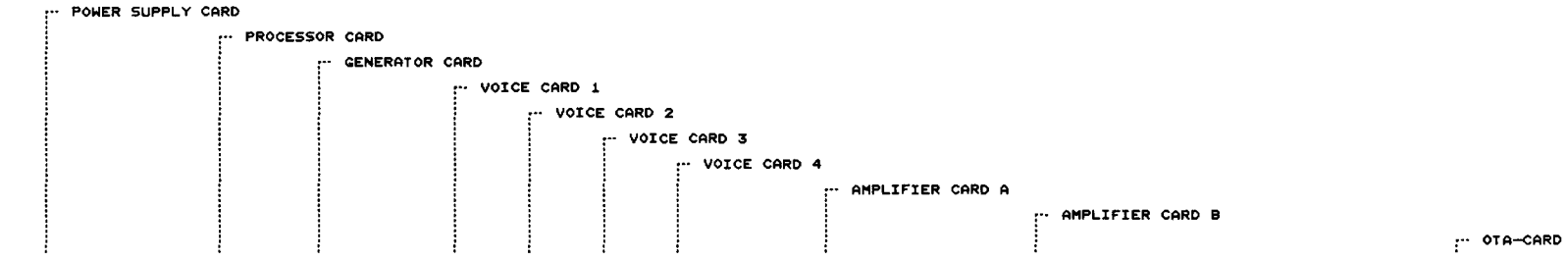
**WESLEY Organs b.v.**

Morsestraat 28 - 6716 AH Ede - Tel. (08380) 37403 - Fax (08380) 22238

# CONTENTS

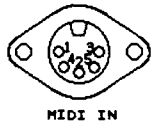
1. BLOCK DIAGRAM
2. POSITION DIAGRAM CARDS (TOPVIEW) & EXTERNAL CONNECTIONS (mounted on the rearside of the organ)
3. PINNING BUS CARD CONNECTORS
4. TRANSFORMER CONNECTIONS & POWER SUPPLY
5. SCANNING KEYING & TRANSPOSER
6. STOP-BANK & SWITCH-BANK CAPTURE SYSTEM
7. CAPTURE SYSTEM
8. PROCESSOR CARD
9. GENERATOR CARD
10. VOICE CARD
11. VOLUMECONTROLS; HEADPHONES CONNECTIONS & ECHO INTERFACE (ota card)
12. EXPRESSION PEDAL CIRCUIT (ota card)
13. AMPLIFIER CARD
14. POSITION DIAGRAM ADJUSTMENTS  
INTERNAL POTENTIOMETERS



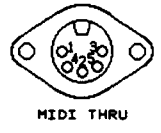


← COMPONENT SIDE

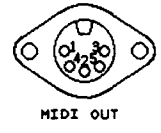
1. NOT CONNECTED
2. NOT CONNECTED
3. NOT CONNECTED
4. +5V MIDI IN
5. MIDI IN



1. NOT CONNECTED
2. NOT CONNECTED
3. NOT CONNECTED
4. +5V MIDI THRU
5. MIDI THRU

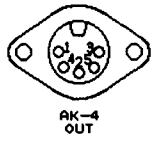


1. NOT CONNECTED
2. NOT CONNECTED
3. NOT CONNECTED
4. +5V MIDI OUT
5. MIDI OUT

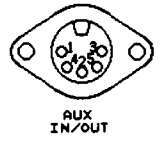


SOLDERING SIDE VIEW

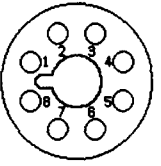
1. AK-4 OUT CHANNEL A
2. GROUND
3. NOT CONNECTED
4. AK-4 OUT CHANNEL B
5. NOT CONNECTED



1. AUX OUT CHANNEL A
2. GROUND
3. AUX IN CHANNEL A
4. AUX OUT CHANNEL B
5. AUX IN CHANNEL B

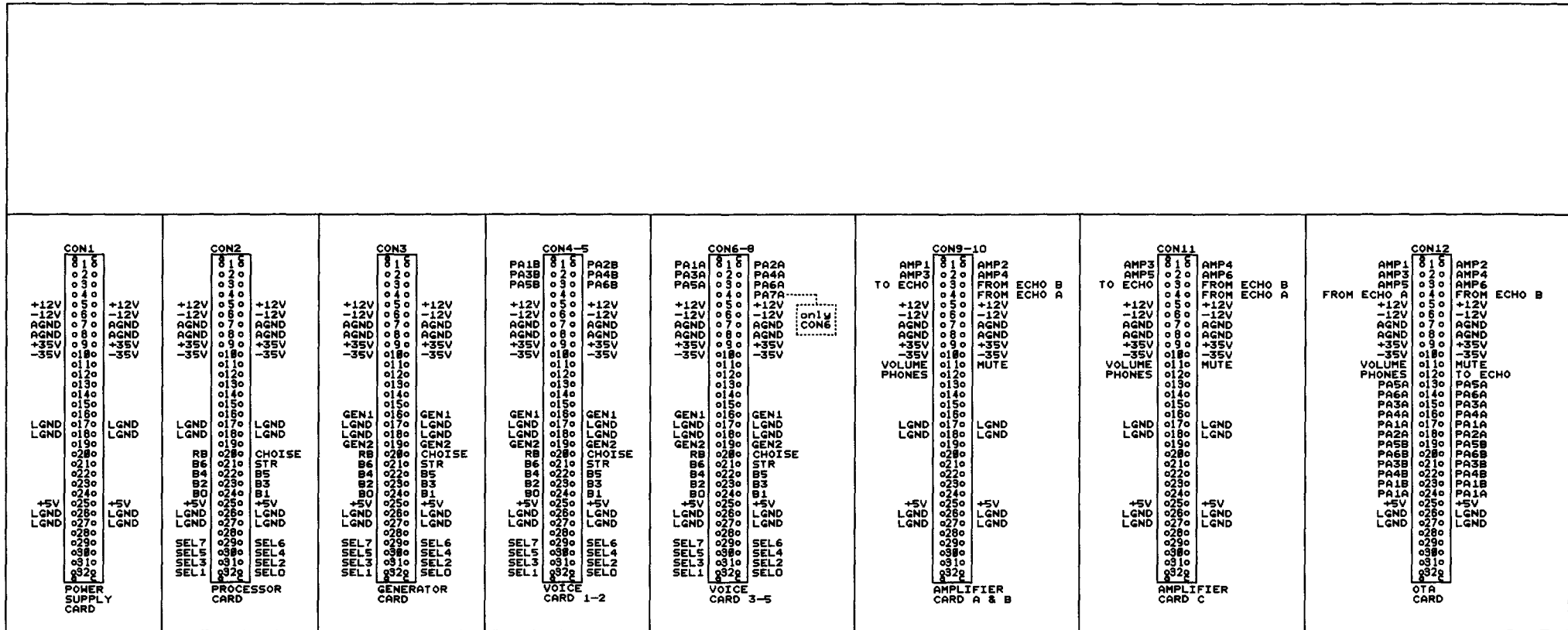


1. - BASS AMPLIFIER
2. + BASS AMPLIFIER
3. - MIDDLE AMPLIFIER
4. + MIDDLE AMPLIFIER
5. - TREBLE I AMPLIFIER
6. + TREBLE I AMPLIFIER
7. - TREBLE II AMPLIFIER
8. + TREBLE II AMPLIFIER

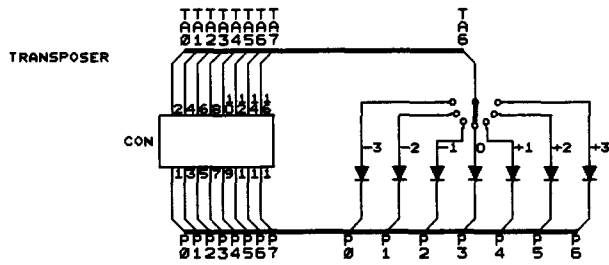
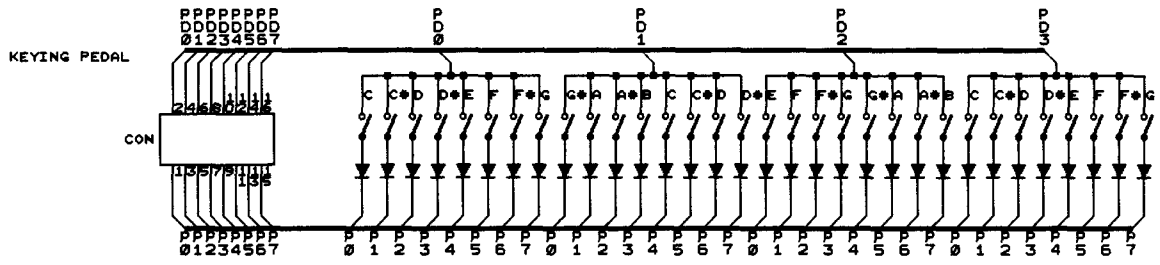
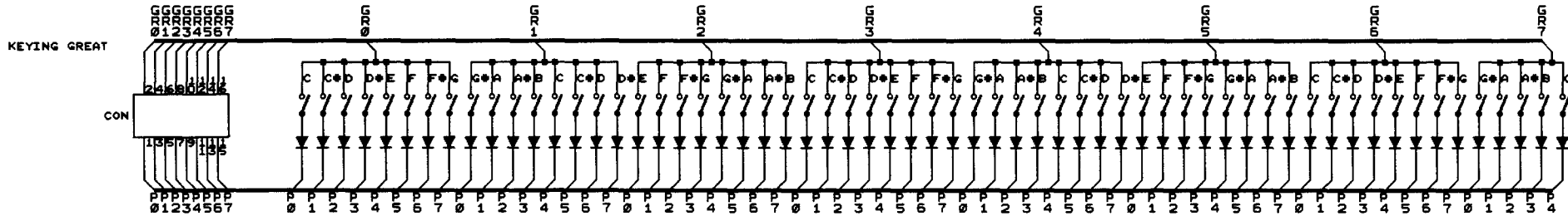
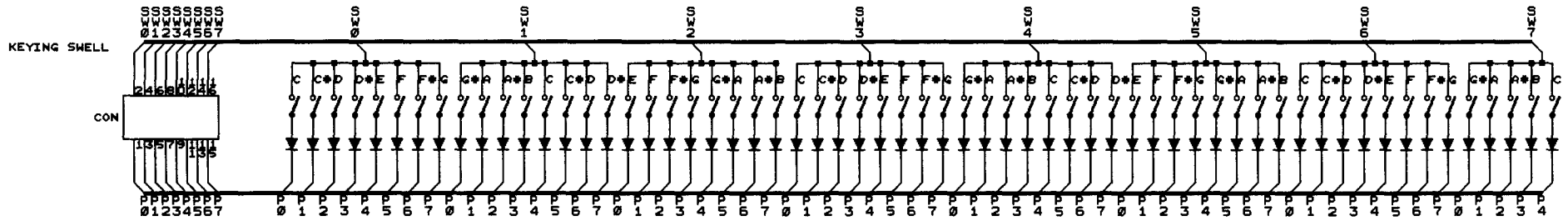


POSITION DIAGRAM CARDS (TOPVIEW) & EXTERNAL CONNECTIONS (mounted on the reverse side of the organ)

DESIGN	DATE	REV.
DRAWN	VERBESCHOR	21-08-92
WESLEY W-32-E		PAGE 2

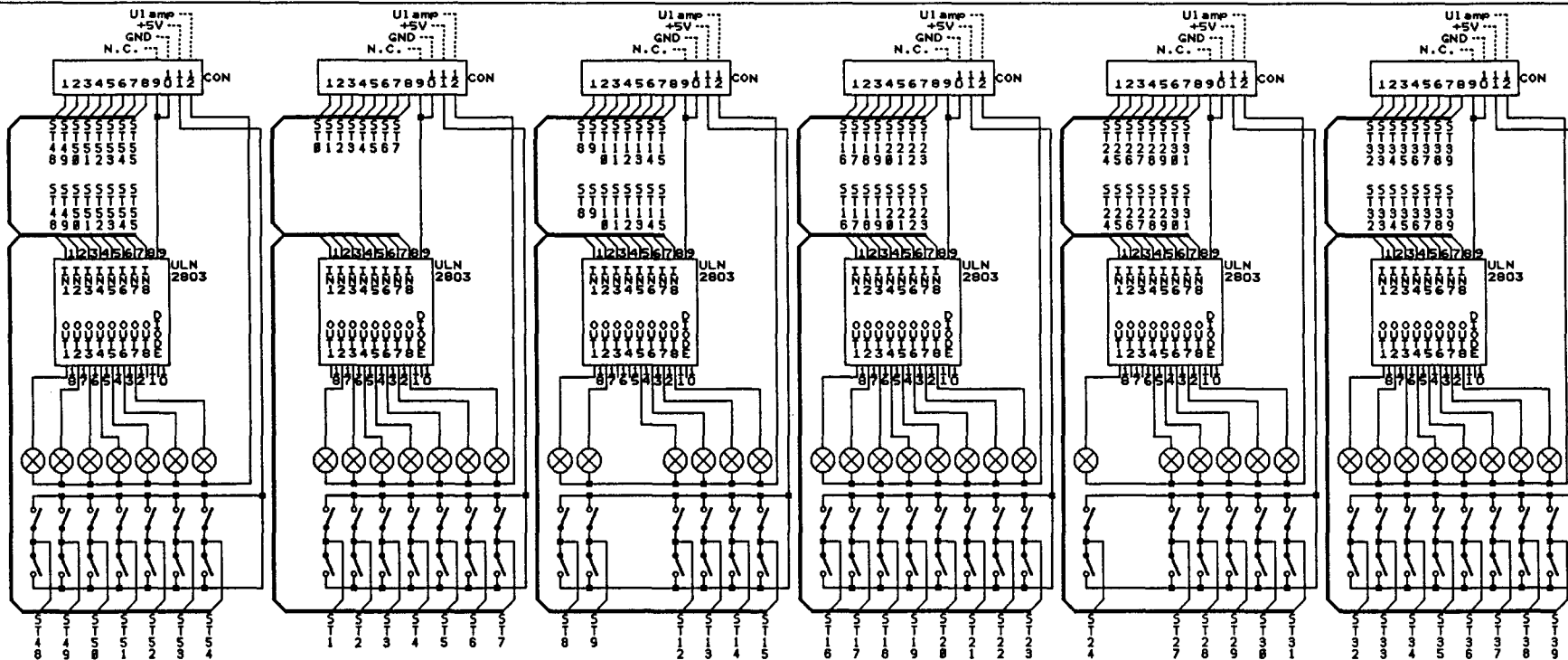




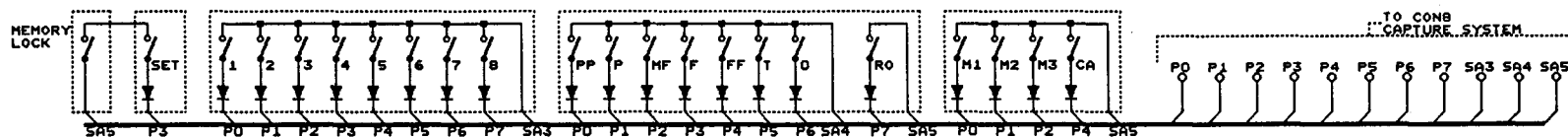


ALL CONNECTORS: TO PROCESSOR CARD  
 ALL DIODES: 1N4148

SCANNING KEYING & TRANSPOSER			
DESIGN	LAB		REV.
DRAWN	VERSCHOOR	21-08-92	PAGE
WESLEY W-32-E			5



SWITCH-BANK CAPTURE SYSTEM



STOPLIST

ACCESSORIES

- ST48 = SWELL TO GREAT
- ST49 = GREAT TO PEDAL
- ST50 = SWELL TO PEDAL
- ST51 = TREMULANT GREAT
- ST52 = TREMULANT SWELL
- ST53 = CHORUS
- ST54 = MANUAL BASS

PEDAL

- ST1 = DOUBLE BASS 16'
- ST2 = SUBBASS 16'
- ST3 = OCTAVE 8'
- ST4 = GEDACKT 8'
- ST5 = BASSFLUTE 4'
- ST6 = MIXTURE III
- ST7 = CONTRA TRUMPET 16'
- ST8 = TRUMPET 8'
- ST9 = MIDI TO PEDAL (CHAN. 3)

GREAT

- ST12 = BOURDON 16'
- ST13 = OPEN DIAPASON 8'
- ST14 = ROHRFLUTE 8'
- ST15 = GAMBA 8'
- ST16 = OCTAVE 4'
- ST17 = OPEN FLUTE 4'
- ST18 = TWELFTH 2 2/3'
- ST19 = SUPEROCTAVE 2'
- ST20 = CONICAL FLUTE 2'
- ST21 = CORNET IV
- ST22 = MIXTURE IV-VI
- ST23 = TRUMPET 8'
- ST24 = MIDI TO GREAT (CHAN. 1)

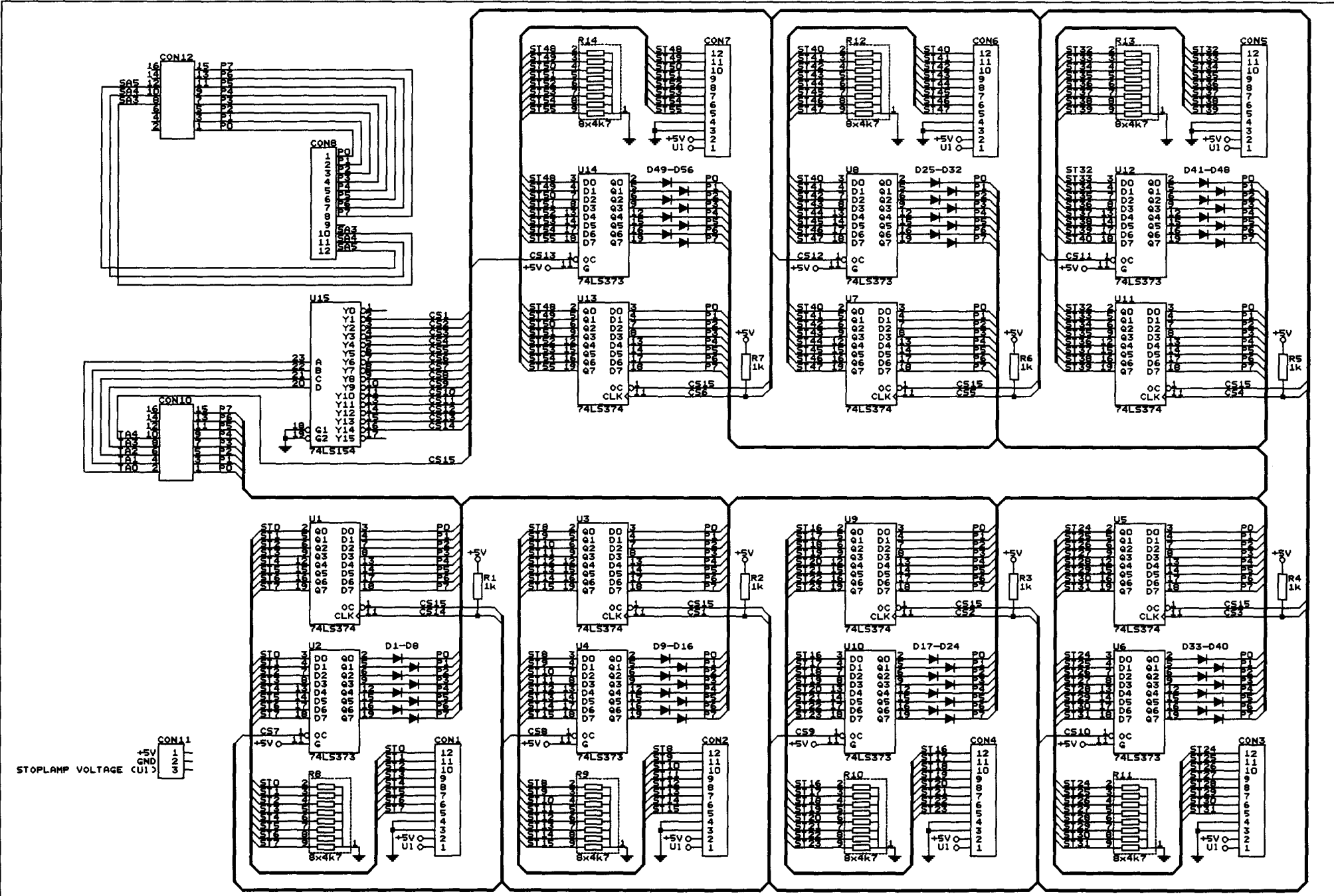
SWELL

- ST27 = OPEN DIAPASON 8'
- ST28 = STOPPED FLUTE 8'
- ST29 = VIOLA 8'
- ST30 = CELESTE 8'
- ST31 = OCTAVE 4'
- ST32 = FLUTE 4'
- ST33 = FLUTE TWELFTH 2 2/3'
- ST34 = WALDFLUTE 2'
- ST35 = TIERCE 1 3/5'
- ST36 = RAUSCHPEIFE II-IV
- ST37 = CROMORNE 8'
- ST38 = OBOE 8'
- ST39 = MIDI TO SWELL (CHAN. 2)

ALL CONNECTORS: TO CAPTURE SYSTEM  
ALL STOPLAMPS: 14Vdc/75mA

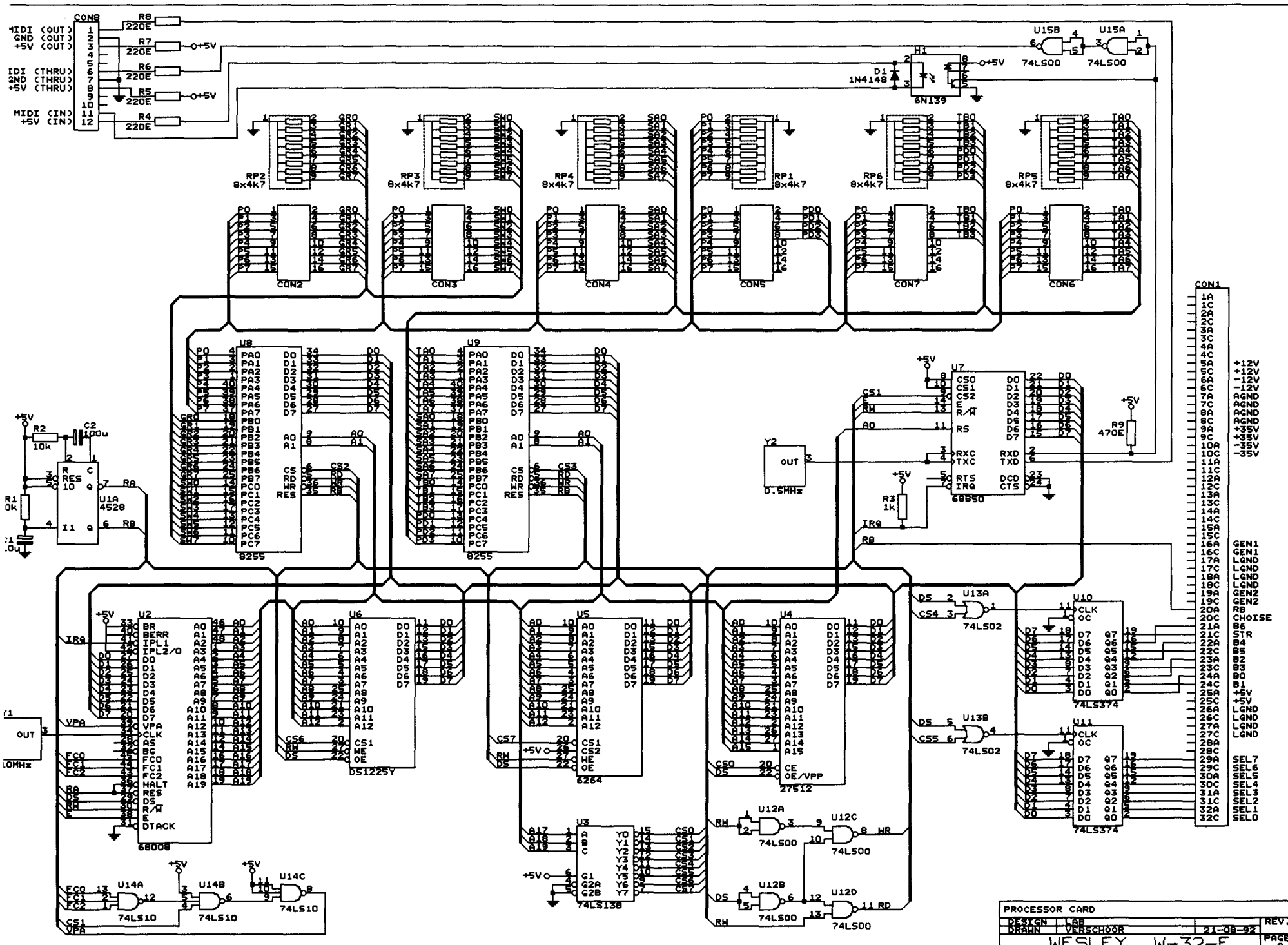
STOP-BANK AND SWITCH-BANK CAPTURE SYSTEM			
DESIGN	LAB		REV.
DRAWN	VERSCHOOR	21-08-92	PAGE
WESLEY W-32-E			6



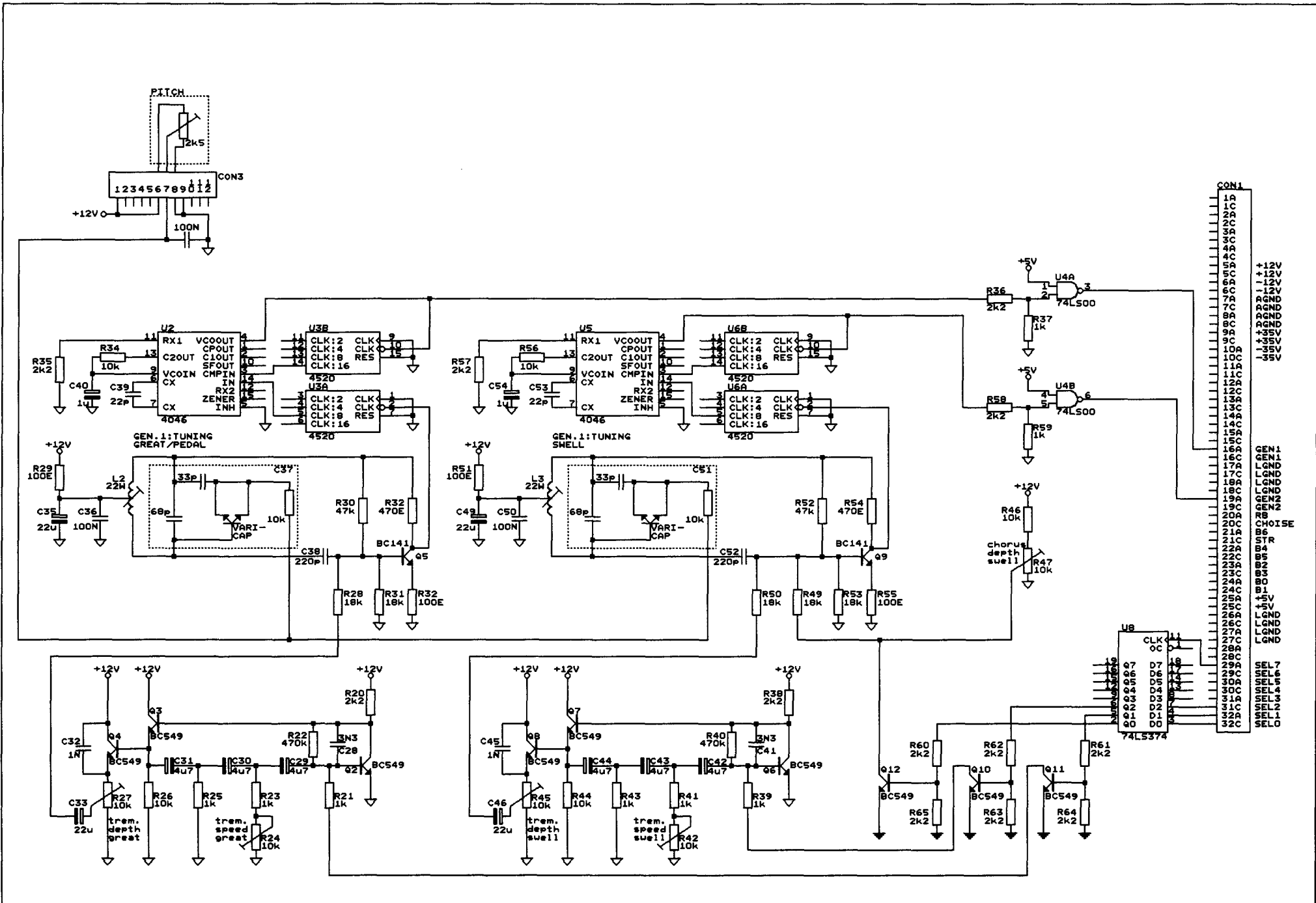


ALL DIODES: IN4148

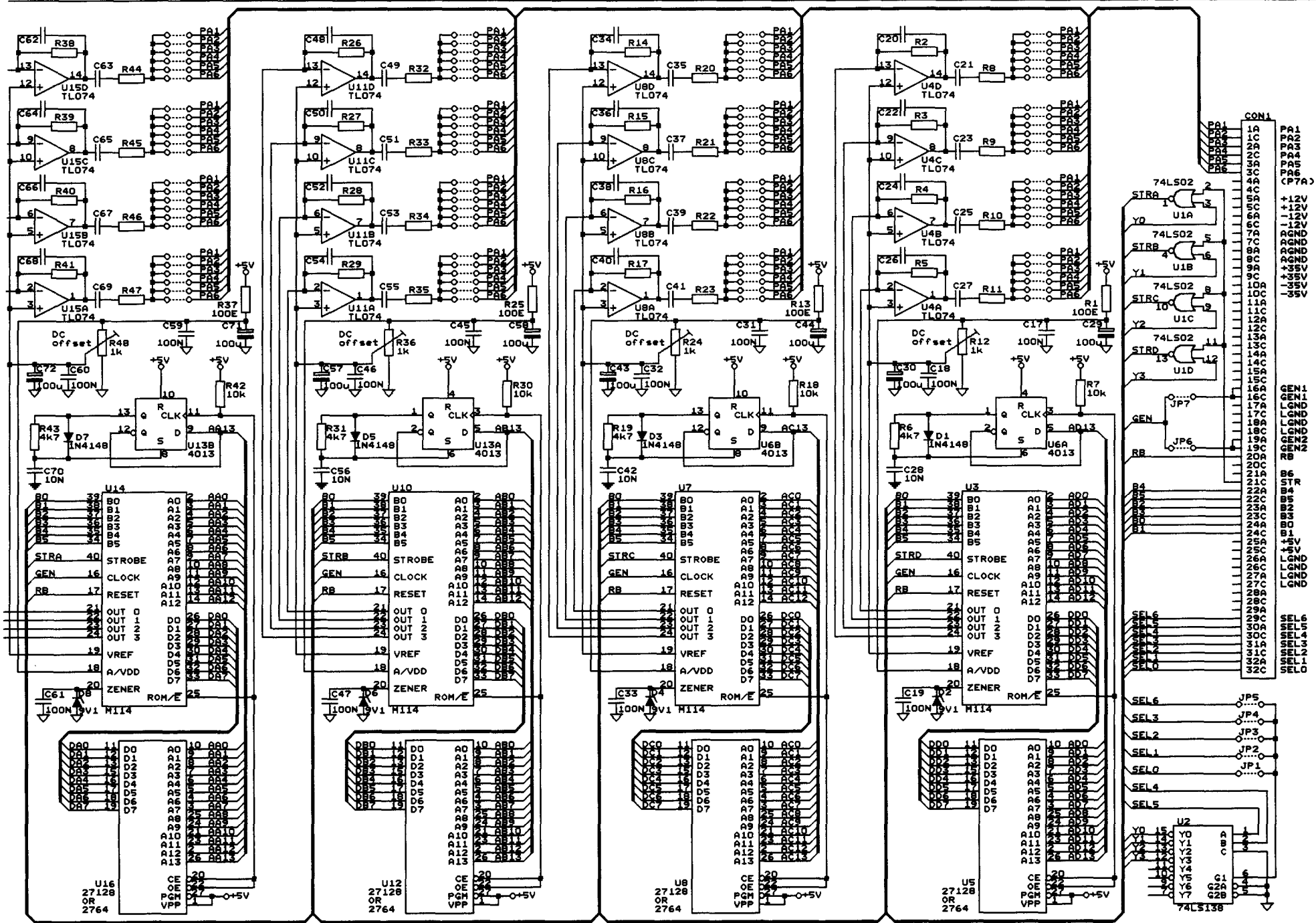
CAPTURE SYSTEM				REV.
DESIGN	LAB			
DRAWN	VERSCHOOR		21-08-92	PAGE
WESLEY W-32-E				7



PROCESSOR CARD			
DESIGN	LAB		REV.
DRAWN	VERSCHOOR	21-08-92	PAGE
WESLEY W-32-F			8

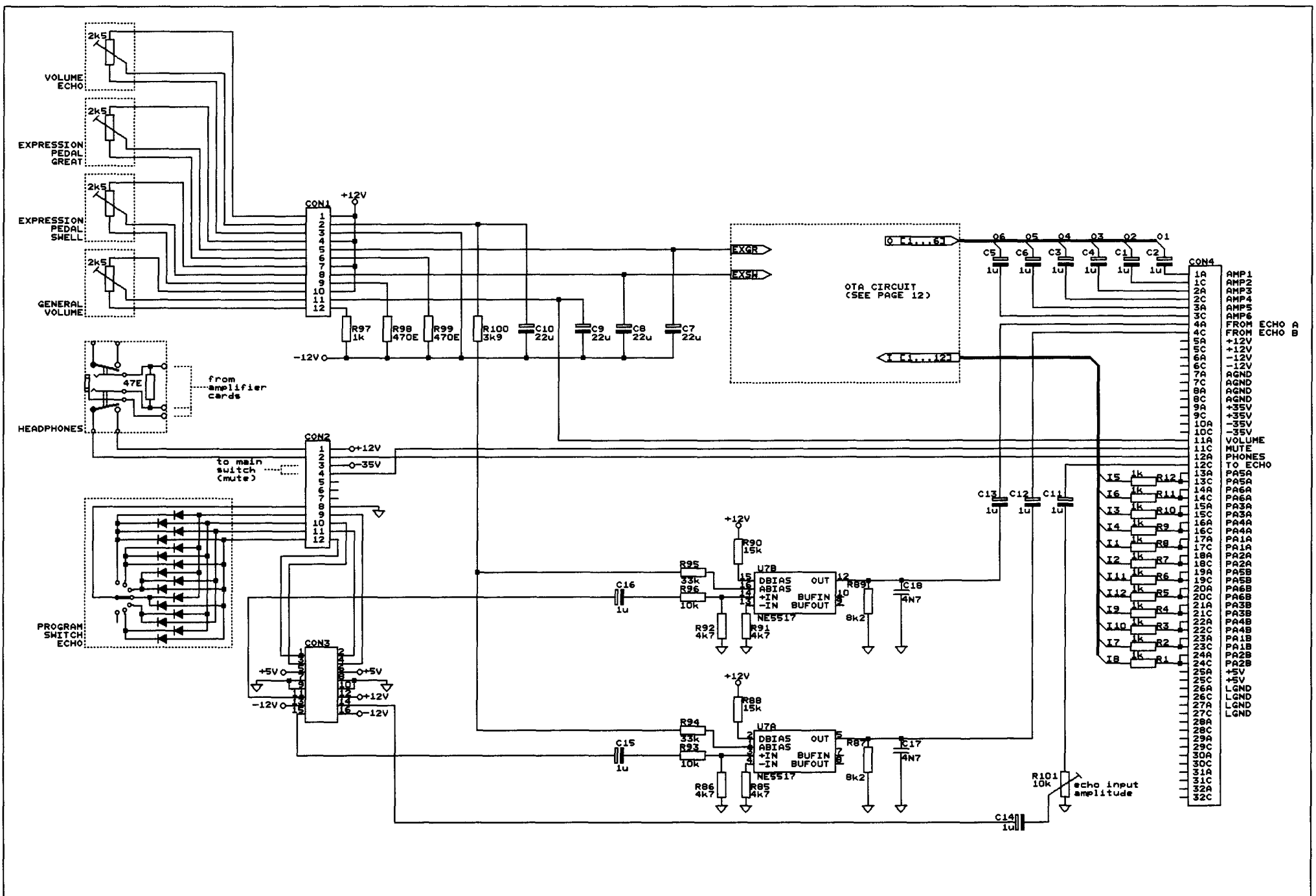


- CON1
- 1A
  - 1B
  - 2A
  - 2B
  - 3A
  - 3B
  - 4A
  - 4B
  - 5A
  - 5B
  - 6A
  - 6B
  - 7A
  - 7B
  - 8A
  - 8B
  - 9A
  - 9B
  - 10A
  - 10B
  - 11A
  - 11B
  - 12A
  - 12B
  - 13A
  - 13B
  - 14A
  - 14B
  - 15A
  - 15B
  - 16A
  - 16B
  - 17A
  - 17B
  - 18A
  - 18B
  - 19A
  - 19B
  - 20A
  - 20B
  - 21A
  - 21B
  - 22A
  - 22B
  - 23A
  - 23B
  - 24A
  - 24B
  - 25A
  - 25B
  - 26A
  - 26B
  - 27A
  - 27B
  - 28A
  - 28B
  - 29A
  - 29B
  - 30A
  - 30B
  - 31A
  - 31B
  - 32A
  - 32B
- GEN1  
GEN1  
LGND  
LGND  
GEN2  
GEN2  
RB  
CHOISE  
B6  
STR  
B4  
B5  
B2  
B3  
B0  
B1  
+5V  
LGND  
LGND  
LGND  
LGND
- SEL7  
SEL6  
SEL5  
SEL4  
SEL3  
SEL2  
SEL1  
SELO

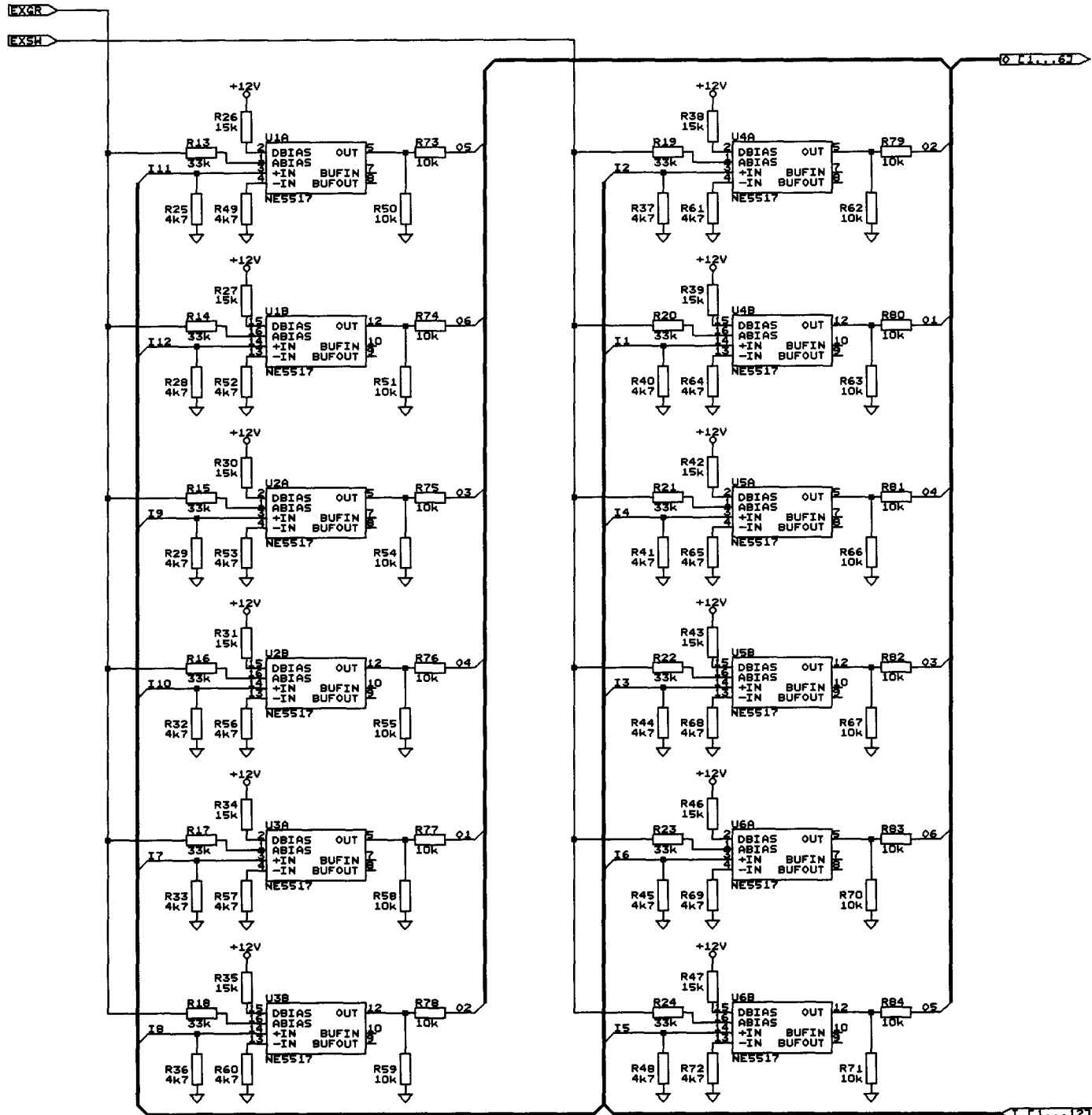


NOTE: IF FOR U5, U8, U12 OR U16 A 2764 EPROM IS PLACED INSTEAD OF A 27128 EPROM, THE 1/2 4013 (U6 AND U13) USED FOR SWITCHING THE UPPER 8K ROM AND THE LOWER 8K ROM, IS NOT NECESSARY.

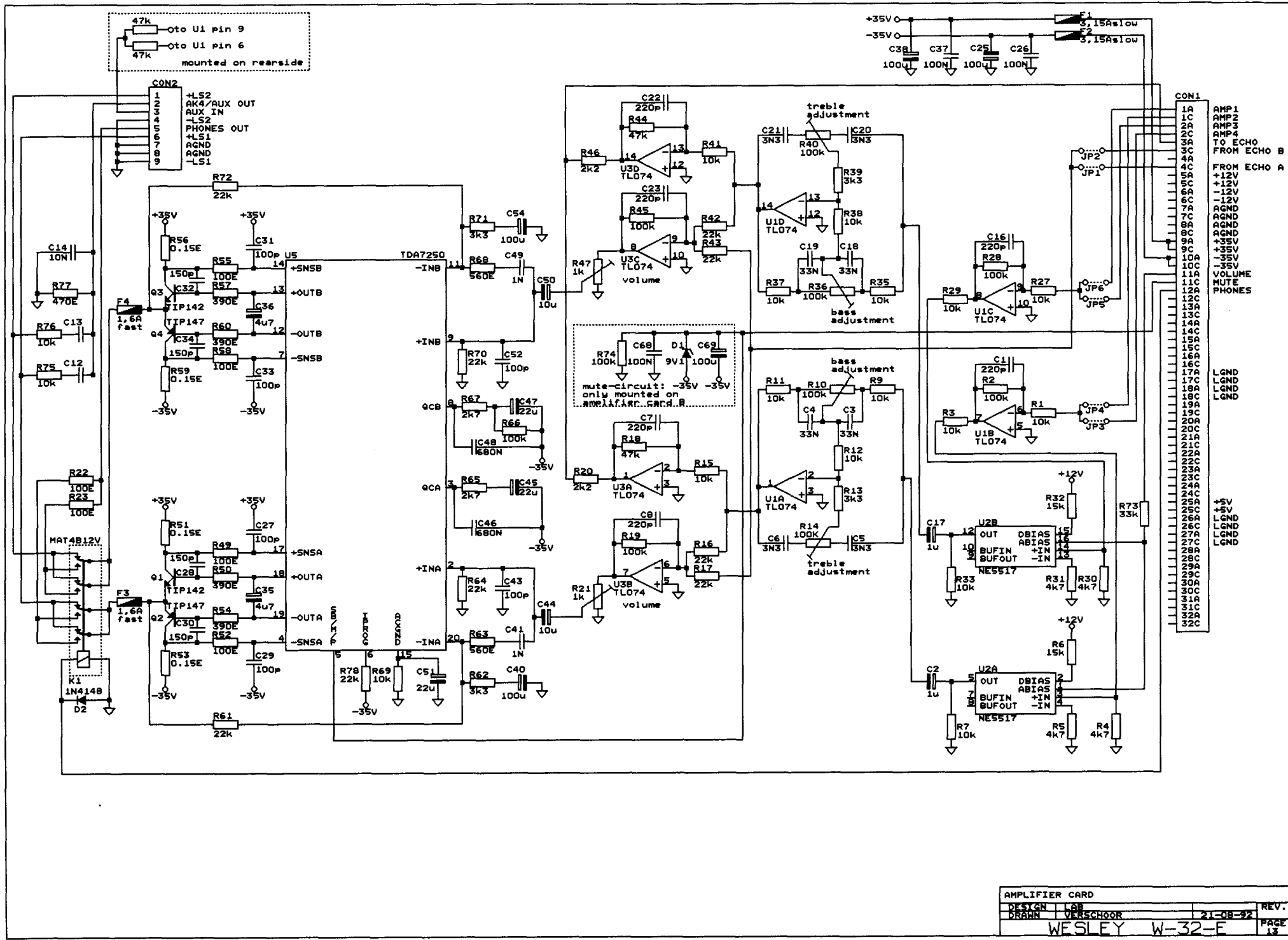
VOICE CARD			
DESIGN	LAB		REV.
DRAWN	VERSCHOOR	21-08-92	10
WESLEY W-32-E			



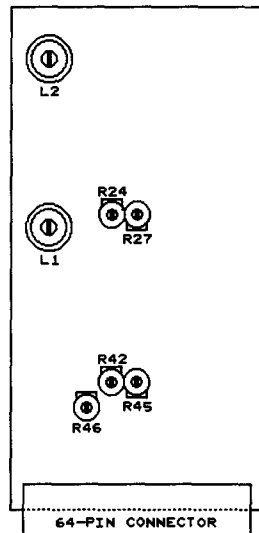
VOLUME CONTROLS; HEADPHONES CONNECTIONS & ECHO INTERFACE (ota card)			
DESIGN	LAB		REV.
DRAWN	VERSCHOOR	21-08-92	PAGE
WESLEY W-32-F			11



EXPRESSION PEDAL CIRCUIT (ota card)			
DESIGN	LAB		REV.
DRAWN	WESLEY	21-08-92	PAGE
WESLEY W-32-E			12

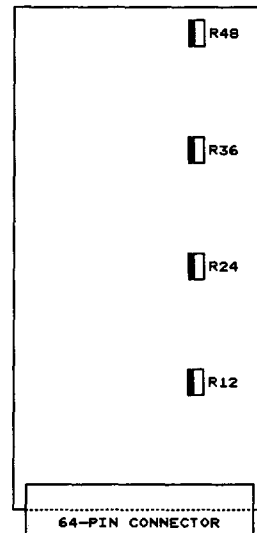


GENERATOR CARD  
(COMPONENT-SIDE VIEW)



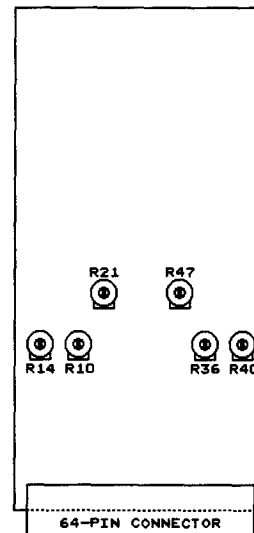
L1 = TUNING SWELL  
 L2 = TUNING GREAT  
 R24 = TREMULANT SPEED GREAT  
 R27 = TREMULANT DEPTH GREAT  
 R42 = TREMULANT SPEED SWELL  
 R45 = TREMULANT DEPTH SWELL  
 R46 = INTENSITY CHORUS EFFECT

VOICE CARD  
(COMPONENT-SIDE VIEW)



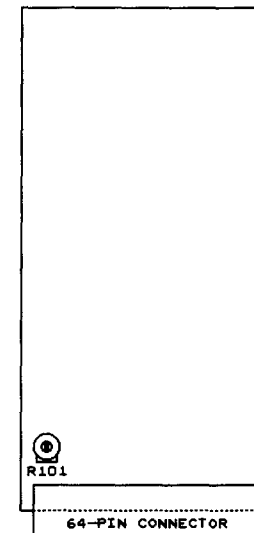
R12 = DC-OFFSET VOICE D  
 (DISTORSION VOICE D)  
 R24 = DC-OFFSET VOICE C  
 (DISTORSION VOICE C)  
 R36 = DC-OFFSET VOICE B  
 (DISTORSION VOICE B)  
 R48 = DC-OFFSET VOICE A  
 (DISTORSION VOICE A)  
 NOTE: R12-R24-R36-R48 ARE NOT  
 FOR CHANGING VOLUMES!!  
 TURNING THESE POTENTIOMETERS  
 WILL GIVE DISTORSION!!

AMPLIFIER CARD  
(COMPONENT-SIDE VIEW)



R10 = BASS LEFT AMPLIFIER  
 R14 = TREBLE LEFT AMPLIFIER  
 R21 = VOLUME LEFT AMPLIFIER  
 R36 = BASS RIGHT AMPLIFIER  
 R40 = TREBLE RIGHT AMPLIFIER  
 R47 = VOLUME RIGHT AMPLIFIER

OTA CARD  
(COMPONENT-SIDE VIEW)



R101 = INPUT AMPLITUDE ECHO